

# Covenant Missionary Baptist Church

Florida City, Florida

Architect: Robert Barnes & Associates



Photos Courtesy of Sodhartha Carvalho

The design concept of the Covenant Missionary Baptist Church was based upon four principles: the Physical, the Vitality, the Heart, and the Soul.

The architect, Robert Barnes & Associates designed a 600-seat sanctuary with a choir and baptismal, elevator/bell tower, and entry plaza. This new construction united with the existing two-story school through a blending of the new structural form with the old.

A contemporary arrangement of curve and cross, which created a heightened sense of newness, oneness and being of community brought vitality to the design.

The gentle bending roof crucifix structure represents the protective, giving arms

of God overseeing us, while the equal length cross-floor plan reflects the four-fold process experienced on the four levels of consciousness: spiritually, mentally, emotionally and physically. Thus the Heart principle was attained.

The Soul of the Church is reflected in the baptistery window's equal length cross that transforms into the glass block crucifix through the light chamber, and reflects the church's desire for growth through transformation.

The Church was completed in September 2005 and has completely blended the new and the old. Covenant Missionary Baptist Church welcomes the community of Florida City with open arms.



## MANUFACTURERS

DIV. 7: Roof: Centria.  
DIV. 8: Windows: PGT Industries.  
DIV. 10: Baptistery: Fiberglass Specialties.  
DIV. 13: Pre-Engineered Building: VP Buildings.

## COVENANT MISSIONARY BAPTIST CHURCH

### ARCHITECT

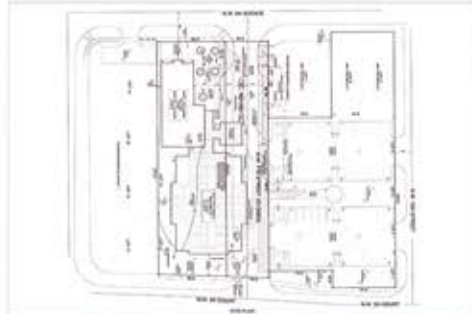
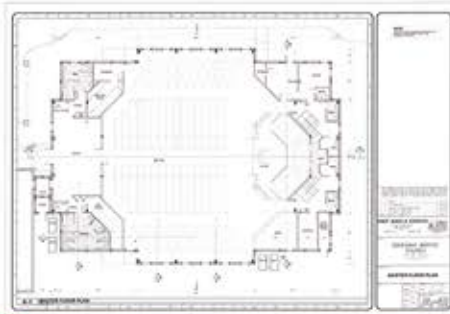
ROBERT BARNES & ASSOCIATES  
221 N. Krome Avenue, Homestead, FL 33030  
www.robertbarnesassociates.com

### CONSTRUCTION TEAM

STRUCTURAL ENGINEER: Erdozain Consulting Engineers  
17290 SW 264th St., Miami, FL 33031  
MECHANICAL & ELECTRICAL ENGINEER:  
Guerrero Gonzalez Engineers  
4300 S.W. 73rd Avenue, #107A, Miami, FL 33155  
GENERAL CONTRACTOR & COST ESTIMATOR:  
Vasallo Construction, Inc.  
61 Grand Canal Drive, Miami, FL 33144  
SOUND DESIGN: Revelation Sound, Inc.  
12910 S.W. 132nd Court, Miami, FL 33186  
STEEL ERECTOR: Lemartec Engineering & Construction Corp.  
4800 S.W. 74th Court, Miami, FL 33155

### GENERAL DESCRIPTION

LOCATION: Florida City, Florida  
DATE BID: April 2004  
CONSTRUCTION PERIOD: May 2004 to Sep 2005  
TOTAL SQUARE FEET: 10,725  
SITE: 1 acre.  
NUMBER OF BUILDINGS: One.  
BUILDING SIZE: First floor, 10,725; total, 10,725 square feet.  
BUILDING HEIGHT: Total, 36'2".  
BASIC CONSTRUCTION TYPE: New.  
FOUNDATION: Cast-in-place, pier & grade beam, slab-on-grade. EXTERIOR WALLS: Pre-engineered, CMU.  
ROOF: Metal. FLOORS: Concrete.  
INTERIOR WALLS: CMU, metal stud drywall.



C.S.I. Divisions	COST	% OF COST	SQ.FT. COST	SPECIFICATIONS
1. 1. PROCUREMENT & CONT. REQ.	---	---	---	Quality requirements, temporary facilities & controls, execution & closeout requirements.
3. 3. GENERAL REQUIREMENTS	179,560	15.96	16.74	Unit.
4. 4. CONCRETE	28,000	2.49	2.61	---
5. 5. MASONRY	15,912	1.41	1.48	---
6. 6. METALS	40,000	3.56	3.73	Rough & finish carpentry, architectural woodwork, structural plastics, plastic fabrications.
7. 7. WOOD, PLASTICS & COMPOSITES	7,369	0.66	0.69	Dampproofing & waterproofing, thermal protection, weather barriers, fire & smoke protection, joint protection.
8. 8. THERMAL & MOISTURE PROTECTION	72,600	6.45	6.77	Doors & frames, specialty doors & frames, entrances, storefronts, & curtainwalls, windows, hardware, glazing, louvers & vents.
9. 9. OPENINGS	204,453	18.17	19.06	Plaster & gypsum board, tiling, ceilings, flooring, wall finishes, acoustic treatment, painting & coating.
10. 10. FINISHES	7,500	0.67	0.70	Information, interior, safety.
11. 11. SPECIALTIES	327,885	29.15	30.57	Pre-engineered structure.
12. 12. FURNISHINGS	---	---	---	Elevator tower doubles as a bell tower. The elevator cab and equipment is future and not purchased.
13. 13. SPECIAL CONSTRUCTIONS	---	---	---	---
14. 14. CONVEYING SYSTEMS	---	---	---	Piping & pumps, equipment, fixtures, pool & fountain plumbing systems.
15. 15. MECHANICAL	26,000	2.31	2.43	Piping & pumps, air distribution, air cleaning devices, central heating, central cooling, central HVAC.
16. 16. PLUMBING	75,500	6.71	7.04	---
17. 17. HVAC	140,181	12.46	13.07	---
18. 18. ELECTRICAL	1,124,960	100.00	\$104.89	---
19. 19. TOTAL BUILDING COST	---	---	---	---
20. 20. EARTHWORK	68,652	---	---	Site clearing, excavation support & protection, special foundations & load-bearing elements.
21. 21. EXTERIOR IMPROVEMENTS	28,956	---	---	Landscaping, irrigation, planting.
22. 22. TOTAL PROJECT COST	1,222,568	---	---	(Excluding architectural and engineering fees)

UPDATED ESTIMATE TO JUNE 2007: \$130.24 PER SQUARE FOOT

Cost model on this case study and hundreds more at DCD.COM in the NHBCdb™ (National Historical Building Cost Database).